



Application:

- troubleshooting LAN / WAN equipment
- connectorization
- optical installation & maintenance

Features:

- easy operation
- affordable
- hand-held, lightweight
- accurate and reliable

Four models all easy choices. Whether you're loss testing your LAN or shooting a long Singlemode run, one of MESON's power meters will give you the accuracy and consistency you need without breaking the bank. If your needs are testing Multimode fiber only, choose the economical single wavelength MC850/PM. The dual wave DB1385/PM is capable of Multimode testing at 850nm and 1300nm, as well as Singlemode testing at 1310nm.

The DB1513/PM tests Singlemode at both the 1310 and 1550nm wavelengths, as well as 1300nm Multimode.

Our most versatile unit, the XL1000 triple wavelength, not only tests Multimode at 850 and 1300nm, but also Singlemode at 1310 and 1550nm: a great value and great performer.

Customers of all sizes appreciate these units' straightforward single switch operation, which virtually eliminates any training. Each meter can mate to eight connector types from ST® to FDDI, using MESON's adapter caps. Power is supplied by a 9V alkaline, which lasts for days.

Buy your MESON meter as part of one of our test kits for the greatest savings.

Specifications	MC850/PM	DB1385/PM	DB1513/PM	XL1000
Wavelength(s)	850nm	850, 1310nm	1310, 1550nm	850, 1310, and 1550nm
Measurement Range	-50 to +3dBm	-50 to +3dBm	-50 to +3dBm	-50 to +3dBm
Resolution	0.1dBm	0.1dBm	0.1dBm	0.1dBm
Accuracy	+/- 0.2dBm	+/- 0.2dBm	+/- 0.2dBm	+/- 0.2dBm
Display, Units	dBm	dBm	dBm	dBm
Battery Life, approximately	80 Hours	80 Hours	80 Hours	80 Hours
Power Supply	9V Alkaline	9V Alkaline	9V Alkaline	9V Alkaline
Operating Temperature	0° to +50° C	0° to +50° C	0° to +50° C	0° to +50° C
Relative Humidity	0 to 95% RH, max	0 to 95% RH, max	0 to 95% RH, max	0 to 95% RH, max
Dimensions (H x W x D)	152 x 82 x 32mm (6.0 x 3.25 x 1.25")	152 x 82 x 32mm (6.0 x 3.25 x 1.25")	152 x 82 x 32mm (6.0 x 3.25 x 1.25")	152 x 82 x 32mm (6.0 x 3.25 x 1.25")
Weight	221g (7.8oz.)	221g (7.8oz.)	221g (7.8oz.)	221g (7.8oz.)
Accessories	Adapter Cap, batt.	Adapter Cap, batt.	Adapter Cap, batt.	Adapter Cap, batt.
Available Connector Port Adapters	ST®, FC, SC, SMA, D4, Biconic, FDDI, MiniBNC	ST®, FC, SC, SMA, D4, Biconic, FDDI, MiniBNC	ST®, FC, SC, SMA, D4, Biconic, FDDI, MiniBNC	ST®, FC, SC, SMA, D4, Biconic, FDDI, MiniBNC

XL1000Z Multi-Wavelength Optical Power Meter



Meson Fiber Optics is proud to introduce the XL1000Z Multi-Wavelength Optical Power Meter. Designed to meet a wide range of measurement requirements, this hand-held device:

- Takes readings at up to 64 different wavelengths – 850, 1310 and 1550 nM standard, others available as special order
- Stores and recalls up to 2000 readings in internal non-volatile memory, each date-and-time-stamped (referenced to GMT)
- Retains stored readings during power off or battery changes
- Provides a separate Zero Reference point for each wavelength
- Provides easy operation via simple menus
- Interfaces via built-in serial port to optional Windows™ software that allows stored readings to be uploaded for viewing, annotation, printing and export to Microsoft™ Excel
- Operates from a 9V battery or AC adapter (both included)

Specifications

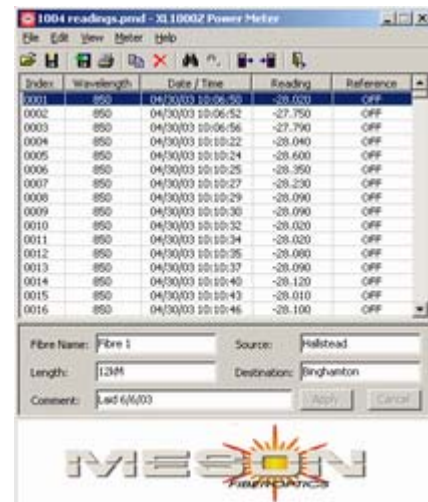
Standard Wavelengths	850, 1310, 1550 nM	Battery Life	> 24 hours
Total # of Wavelengths	64	Power Supply	9V Alkaline / AC Adapter
Measurement Range	-50 to +3 dBm	Operating Temperature	0° to +50° C
Max # of Stored Readings	2000	Relative Humidity	0 to 95%
Resolution	0.01 dBm	Dimensions	152 x 82 x 32 mm
Accuracy	±0.2 dB at 25° C	Weight	221g
Display	dBm	Accessories	AC Adapter, Battery

Optional Windows™ Software

Meson also offers a companion Windows™ program that interfaces to the XL1000Z meter via a standard RS-232 serial port.

Supplied on a CD, this software:

- Transfers readings to and from the XL1000Z and converts GMT time stamps to and from your local time zone
- Allows readings to be annotated with fiber name, source, destination, length and a comment
- Provides searching, sorting and local printing capability
- Exports readings to Comma-Separated-Value (CSV) files that can be imported into any spreadsheet program
- Includes a comprehensive on-line help file
- Works with Windows™ 98, NT, 2000 and XP



For more information or to place an order, call or email:

Meson Fiber Optics
 One Technology Drive
 Hallstead, PA 18822 USA
 1-800-45-MESON

www.mesonfiberoptics.com
info@mesonfiberoptics.com

